



Justice Resource Institute

jri.org

THE
MEADOWS[®]

CONFIDENTIAL & CARING TREATMENT

themeadows.com



21st Annual International Trauma Conference

PSYCHOLOGICAL TRAUMA:

Neuroscience, Attachment,
and Therapeutic Interventions

May 19 - 22, 2010
Seaport World Trade Center
Boston, Massachusetts

CONFERENCE DIRECTOR:

Bessel A. van der Kolk, MD

PRE-CONFERENCE INSTITUTES

Wednesday, May 19, 2010
(two-day pre-conference)

*Please note this pre-conference runs TWO DAYS:
Wednesday, May 19, and Thursday, May 20.*

Workshop I Yoga and the Traumatized Relation to the Body: An Experiential Training for Clinicians and Other Health Care Providers Working with Traumatized Clients

PRE-CONFERENCE INSTITUTES

Thursday, May 20, 2010
(one-day pre-conference)

*Each pre-conference workshop meets all day Thursday, May 20.
Please choose Workshop II, III, IV, V, or VI on the registration form.*

Workshop I Continued (see above)

Workshop II Parts Work: A Model for Working with Dissociative Parts

Workshop III Sensorimotor Psychotherapy and Brain Development

Workshop IV Rhythms and Their Role in Brain Development, Attachment, Companionship, and Trauma

Workshop V Project Joy: Working with Improv, Movement, and Action: Experiential Workshop

Workshop VI Integrating Affective Neuroscience and Attachment Research into the Treatment of Complex Trauma and Dissociative Disorders

PRE-CONFERENCE INSTITUTES

May 19 - 20, 2010

Schedule for Pre-conference Institutes:

Registration 8:00 a.m. - 8:30 a.m.

Program 8:30 a.m. - 5:15 p.m.

Lunch (on your own) 12:30 p.m. - 2:00 p.m.

Please choose Workshop I, II, III, IV, V, or VI on the registration form.

WORKSHOP I:

(This workshop meets two days – Weds., May 19, and Thurs., May 20.)

Yoga and the Traumatized Relation to the Body: An Experiential Training for Clinicians and Other Health Care Providers Working with Traumatized Clients

David Emerson, RYT • Elizabeth Hopper, PhD • Jennifer Turner

Over the past four years, the Trauma Center has developed a regular yoga program for traumatized individuals, as well as a national training course for yoga instructors. In addition, the TC has conducted the first NIH-funded scientific research looking at how hatha yoga affects the symptomatology of PTSD. With compelling subjective feedback from trauma survivors (e.g., “I feel like I can now use my body”), we have shown that yoga can change core physiological functioning. In this two-day training, we will present background information, simple practices to address the most fundamental and persistent symptoms of PTSD, and tools for self-care. We also stress that working with severely traumatized clients is challenging and requires special attention to one’s own health and well-being.

WORKSHOP II:

Parts Work: A Model for Working with Dissociative Parts

Frances K. Grossman, PhD, ABPP • Marla Zucker, PhD

In this workshop we present a model for accessing and working with dissociative parts of clients with PTSD, DDNOS, DID, or BPD. This model provides a way for therapists to use their relationships with clients, supporting them directly in parts work to facilitate healing. This workshop assumes at least several years of experience with trauma treatment. Therapists with IFS training can likely benefit because of the ways this workshop supports clients who may not be able to participate in regular IFS treatment.

WORKSHOP III:

Sensorimotor Psychotherapy and Brain Development

Pat Ogden, PhD • Ruth Lanius, MD, PhD

This workshop will explore the effects of trauma and early attachment disruptions on physical experience and brain function. Participants will learn the body’s response to trauma (disrupted attachment relationships), as well as the interactions between experience, mind, body, and brain. The workshop will focus on sensorimotor psychotherapy and the clinical implications of neuroscience research for therapeutic interventions.

WORKSHOP IV:

Rhythms and Their Role in Brain Development, Attachment, Companionship, and Trauma

Colwyn Trevarthen, PhD • John Gruzelier, MD • Ed Hamlin, PhD • Juri D. Kropotov, PhD • Ed Tronick, PhD • Elizabeth Warner, PsyD • Laurence M. Hirshberg, PhD • Bessel van der Kolk, MD • Eli Newberger’s Jazz Tuber Trio

Rhythms and music inspire human beings to move and experience their world, their bodies, and one another. Both originate in brain structures and connections involved in moving and feeling, and they guide behavior with a goal-defining sense of purpose and creativity. Intelligent perception, learning, and a sense of sympathy and cooperation in meaning between

humans depend on this spontaneous, self-regulating brain activity. Physical imitation, resonance, and mirroring form the foundations of human relatedness. Shared feelings of companionship determine how we acquire knowledge, skills, and the self-confidence to share them.

Disturbances of early communication interfere with the development of interpersonal intelligence, disturb the development of secure and affectionate relationships, and impair learning of cultural meaning, bringing shame. This workshop will explore the nature of these rhythmical and musical interactions, and how the re-establishment of one’s capacity for rhythmicity and musicality offers ways to re-establish a secure sense of self, recognition of others, and joyful appreciation.

This workshop will consist of three parts:

1. In the morning we will explore how the central nervous system matures in the context of interpersonal rhythms of intention and sympathy of experience, and how reparation of the damage resulting from disruptions of attachment, betrayed zest for knowledge, and trauma can utilize rhythms and music. Faculty: Trevarthen, Tronick, Newberger’s Jazz Tuber Trio, Warner and van der Kolk.
2. In the early afternoon, we will explore the intrinsic rhythms of the brain and the role of neurofeedback in changing attentional and regulatory systems in the central nervous system. Faculty: Kropotov, Hamlin, Gruzelier and Hirshberg.
3. At the end of the afternoon, the members of the two experiential workshops – sensorimotor (Ogden and Lanius) and Project Joy (Gross and colleagues) – will join this workshop for an integrative approach to the utilization of rhythms and movement in the treatment of trauma-related disorders.

WORKSHOP V:

Project Joy: Working with Improv, Movement, and Action: Experiential Workshop

Steven Gross, MSW • Emily Saul, EdM, LMHC • Anthony Toombs, BA

Nurturing playfulness in a child can enable him or her to be resilient in the face of fear and adversity. This workshop will explore playfulness as a basic, adaptive human trait and how it can be nurtured to foster the healthy social and emotional development of children and families whose lives have been impacted by acute and/or chronic trauma.

WORKSHOP VI:

Integrating Affective Neuroscience and Attachment Research into the Treatment of Complex Trauma and Dissociative Disorders

Kari A. Gleiser, PhD • Erica Zinter, LICSW

Evolving new therapeutic models for treating complex trauma and dissociative symptomatology requires interweaving, from the bottom up, threads of understanding gleaned from theoretical and scientific research data. This workshop will present brief overviews from the fields of affective neuroscience and attachment/development, closely paired with case studies and videotaped segments of actual therapy sessions with complex trauma and DID patients, illustrating how they can specifically and directly guide and enrich clinical encounters.

COURSE DESCRIPTION

The study of psychological trauma has been accompanied by an explosion of knowledge about how experience shapes the central nervous system and the formation of the self. Developments in the neurosciences, developmental psychopathology, and information processing have contributed to our understanding of how brain function is shaped by experience, and the understanding that life itself can continually transform perception and biology. Within the disciplines of psychiatry and psychology, the study of trauma has probably been the single most fertile area in developing a deeper understanding of the relationship among the emotional, cognitive, social, and biological forces that shape human development. Starting with post-traumatic stress disorder (PTSD) in adults and expanding into early attachment and overwhelming experiences in childhood, this endeavor has elucidated how certain experiences can “set” psychological expectations and biological selectivity.

We have learned that most experience is automatically processed on a subcortical level, i.e., by “unconscious” interpretations that take place outside of awareness. Insight and understanding have only a limited influence on the operation of these subcortical processes. When addressing the problems of traumatized people who, in a myriad of ways, continue to react to current experience as a replay of the past, there is a need for therapeutic methods that do not depend exclusively on understanding and cognition.

OBJECTIVE

The objective of this course is to present current research findings on how people’s brains, minds, and bodies respond to traumatic experiences; how they regulate emotional and behavioral responses; and the role of relationships in protecting and restoring safety and regulation.

We will explore post-traumatic responses at different developmental levels, as well as the treatment implications of these findings. We also will explore how affect regulation and the interpretation of innocuous stimuli as threats require interventions aimed at restoring active mastery and the capacity to focus on the present. Traumatic memories often are dissociated and may be inaccessible to verbal recall or processing. Therefore, close attention must be paid to the development of inner resources to deal with dysregulation and helplessness, as well as the careful timing of the exploration and processing of the traumatic past.

In closing, the course will examine cutting-edge treatment interventions for various trauma-based symptoms.

A Perfect Waterfront Location

The Seaport World Trade Center is located on Boston Harbor, a beautiful place for a conference/short vacation in the spring and early summer. With an abundance of sun and temperatures in the low 70s, the harbor is one of Boston’s best-kept secrets this time of year.

Located within easy walking distance of the Silver Line subway, the hotel offers convenient access to all of Boston’s sites and visitor attractions.



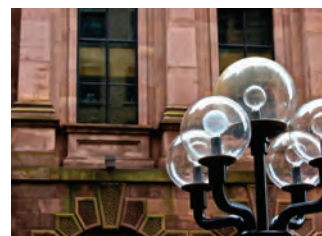
CONFERENCE LOCATION
Seaport World Trade Center

CONFERENCE HOTEL
The Seaport Hotel (adjacent to the World Trade Center)
One Seaport Lane
Boston, MA 02210
877-732-7678
seaportboston.com

RESERVATIONS
The conference attendee rate is \$219 per night. Reservations can be made directly with the hotel; call toll-free 1-877-SEAPORT. Please mention that you are attending the Trauma Conference.

TRANSPORTATION
Air travelers can reach the Seaport by taxi in less than 10 minutes from Logan International Airport.

MASS TRANSIT
Traveling on the T: Take the Silver Line to the World Trade Center stop. You also can take the Silver Line from the airport to the WTC stop. Detailed information can be found at mbta.com.



Friday

FRIDAY, MAY 21, 2010

- 8:00 – 8:30 a.m.** Registration
- 8:30 – 8:45 a.m.** **Introduction**
Bessel A. van der Kolk, MD
- 8:45 – 9:45 a.m.** **A Bad Beginning: The Neurobiology of Early Trauma, Abuse, and Neglect**
Ed Hamlin, PhD
- 9:45 – 10:45 a.m.** **Attentional Systems of the Brain: qEEG/ERP Assessment and Neuromodulation**
Juri D. Kropotov, PhD
- 10:45 – 11:00 a.m.** Coffee Break
- 11:00 – 12:00 p.m.** **Neurofeedback and its Benefits for Psychological Integration and Creativity**
John Gruzelier, MD
- 12:00 – 12:30 p.m.** **Panel Discussion and Questions**
- 12:30 – 1:45 p.m.** Lunch (*On Your Own*)
- 1:15 – 1:45 p.m.** **Chair Yoga (Optional)**
David Emerson, RYT
- 1:45 – 2:45 p.m.** **Exercise and Play: Tonics for the Soul and Brain**
John Ratey, MD
- 2:45 – 3:00 p.m.** Coffee Break
- 3:00 – 5:00 p.m.** **Afternoon Workshops**
(*Sign up for afternoon workshops on the day of the conference – see next column.*)
- 5:00 – 6:00 p.m.** **Formal Poster Session/Social Hour**
- 5:00 – 5:45 p.m.** **Native Flute, Meditation, and Mirroring Dance (Optional)**
Dana Moore, MAR, MA

FRIDAY-AFTERNOON WORKSHOPS

Sign up for afternoon workshops on the day of the conference.

SMART
Sensorimotor Arousal Regulation Treatment for Traumatized Children, Part 1
(*Recommended for Part 2 but not required.*)
Anne Westcott, LICSW • Elizabeth Warner, PsyD • Jane Koomar, PhD, OTR/L, FAOTA • Alex Cook, PhD

Trauma and Sexuality: Lifting the Veil on Human Sexuality in Trauma Treatment, Part 1
(*Recommended for Part 2 but not required.*)
Betta de Boer-van der Kolk, LICSW • Meg Striepe, PhD

Neurofeedback and its Potential for Changing Mental Functioning
Juri D. Kropotov, PhD • John Gruzelier, MD • Laurence M. Hirshberg, PhD • Ed Hamlin, PhD

Working with Body-oriented Psychotherapy (PBSP) in Severely Traumatized Cultures: A Report from Kinshasa, Congo
Albert Pessô

Parent Child Interaction Therapy
Kristina Konnath, LICSW • Dawna Gabowitz, PhD

Conducting Psychological Evaluations with Survivors of Human Trafficking
Elizabeth Hopper, PhD • Cynthia Kennedy, LICSW

Developmental Trauma Disorder: The Evolution of a New Diagnostic Construct
Joseph Spinazzola, PhD



Saturday

SATURDAY, MAY 22, 2010

- 8:00 – 8:30 a.m.** Registration
- 8:30 – 9:30 a.m.** **Loss of Attachment and Loss of Companionship: Which Hurts the Brain Most?**
Colwyn Trevarthen, PhD
- 9:30 – 10:30 a.m.** **Infants' Reactivity and Coping With Stress: Here Today, Gone Tomorrow?**
Ed Tronick, PhD
- 10:30 – 10:50 a.m.** Coffee Break
- 10:50 – 12:00 p.m.** **Lessons from Kids and Families on the Treatment of Developmental Trauma**
Margaret E. Blaustein, PhD
- 12:00 – 12:30 p.m.** **Panel Discussion and Questions**
- 12:30 – 1:45 p.m.** Lunch (*On Your Own*)
- 1:15 – 1:45 p.m.** **Chair Yoga (Optional)**
David Emerson, RYT
- 1:45 – 3:45 p.m.** **Afternoon Workshops**
(*Sign up for afternoon workshops on the day of the conference – see next column.*)
- 3:45 – 4:00 p.m.** Coffee Break
- 4:00 – 5:00 p.m.** **Is It in You? The Role of Playfulness in Healing and Strengthening People**
Steven Gross, MSW
- 5:00 – 5:15 p.m.** **Presentation of the Edward M. Kennedy Unsung Hero Award**
- 5:15 – 5:45 p.m.** **Closing: Quaker-style Sharing and Debriefing (Optional)**

SATURDAY-AFTERNOON WORKSHOPS

Sign up for afternoon workshops on the day of the conference.

SMART ART
Sensorimotor Arousal Regulation Treatment for Traumatized Children with Art Approaches, Part 2 (Part 1 recommended but not required.)

Michelle Harris, LMHC, ATR-BC • Erika Lally, LMHC, ATR-BC

Trauma and Sexuality: Lifting the Veil on Human Sexuality in Trauma Treatment, Part 2 (Part 1 recommended but not required.)

Betta de Boer-van der Kolk, LICSW • Meg Striepe, PhD

Pharmacological Interventions with Traumatized Individuals

Frank Guastella Anderson, MD

Quieting Chaos: Treating Trauma Integrating Neurofeedback with Psychotherapy (Case Vignettes and Lecture)

Sebern Fisher, MA, BCIA

Integrative Medicine and Innovative Therapies for Trauma and Inducing Resiliency in the US Armed Forces

Nisha N. Money, MD, MPH, ABHM

Local Approaches to Healing of Trauma: Symbolic Reparations for Victims of Human Rights Violations in Cambodia and India

Inger Agger, PhD



Faculty

Inger Agger, PhD

Consultant to Rehabilitation and Research Centre for Torture Victims, Copenhagen. She has worked on five continents on human rights violations.

Frank Guastella Anderson, MD

Supervising Psychiatrist, Trauma Center at Justice Resource Institute.

Margaret E. Blaustein, PhD

Director of Training, the Trauma Center at JRI; co-author, *Treating Traumatic Stress in Children and Adolescents: How to Foster Resilience Through Attachment, Self-regulation, and Competency*.

Betta de Boer-van der Kolk, LICSW

Supervisor, Trauma Center; Center for Integrative Healing; Advisor of Independent Studies, Lesley College; Rubenfeld Synergist; Advanced Tantra Yoga Educator.

Alex Cook, PhD

SMART team member; Senior Supervisor, Trauma Center at JRI; member of the Management Team; author, *With the Phoenix Rising* and *A White Paper: Complex Trauma in Children and Adolescents*.

David Emerson, RYT

Yoga Instructor; President, Black Lotus Yoga Studio; Director, Trauma Center Yoga Project.

Sebern Fisher, MA, BCIA

Psychotherapist incorporating neurofeedback into clinical practice in Northampton, MA.

Dawna Gabowitz, PhD

Clinical Director of Metrowest Behavioral Health Center in Acton, MA, training and supervising clinicians in the implementation of PCIT-A.

Kari A. Gleiser, PhD

Senior Faculty member at the AEDP Institute; co-director of The Center for Integrative Health in Hanover, NH.

Steven Gross, MSW

Founding Playmaker of Project Joy, Executive Director of the Life is Good Kids Foundation, and shameless joke teller.

Frances K. Grossman, PhD, ABPP

Professor Emeritus, Boston University Department of Psychology; Senior Supervisor, Trauma Center at JRI.

John Gruzelier, MD

Professor of Psychology, Goldsmiths, University of London UK; President, Society for Applied Neuroscience (SAN); Editor, *Contemporary Hypnosis*; 2004 Ernest R. Hilgard Award recipient.

Ed Hamlin, PhD

Clinical Director, Pisgah Institute's Center for the Advancement of Human Potential; adjunct faculty, East Tennessee State University Medical Center and Western Carolina University.

Michelle Harris, LMHC, ATR-BC

Art therapist and SMART team member, Trauma Center at JRI; faculty, Lesley University.

Laurence M. Hirshberg, PhD

Director, The NeuroDevelopment Center; Clinical Assistant Professor of applied neuroscience and neurofeedback, Brown University Medical School.

Elizabeth Hopper, PhD

Program Director of Project REACH, a program working against human trafficking throughout the United States; Staff Psychologist, Supervisor, and Associate Director of Training, Trauma Center at JRI.

Cynthia Kennedy, LICSW

Program Coordinator, New England Coalition Against Trafficking (NECAT); Consultant, Project REACH, Trauma Center at JRI.

Kristina Konnath, LICSW

Clinician, Trauma Center at JRI, trainer of tPICT.

Jane Koomar, PhD, OTR/L, FAOTA

Executive Director and Co-founder, Occupational Therapy Associates, Watertown, MA; President of the Board of the Spiral Foundation; Sensory Integration Consultant to SMART.

Juri D. Kropotov, PhD

Director, Laboratory of the Institute of the Human Brain of The Russian Academy of Sciences (St. Petersburg); professor, Institute of Psychology of Norwegian University for Science and Technology (Trondheim); recipient, USSR State Prize and Copernicus Prize of Polish Neuropsychological Society; author, *Quantitative EEG, Event Related Potentials and Neurotherapy*.

Erika Lally, LMHC, ATR-BC

Art therapist and SMART team member; adjunct faculty, Lesley University.

Ruth Lanius, MD, PhD

Professor, Department of Psychiatry, University of Western Ontario, Canada; Co-editor (with Erik Vermetten), *The Hidden Epidemic: The Impact of Early Life Trauma on Health and Disease*.

Nisha N. Money, MD, MPH, ABHM

Physician Epidemiologist for global emerging infections surveillance and response operations. Former U.S.A.F. Chief of Air Force Fitness Policy for the Office of the Surgeon General, U.S.A.F. Headquarters, Pentagon; Founder-president, Quantum Resiliency Institute.

Dana Moore, MAR, MA

Psychotherapist and kripalu yoga teacher, Uniformed Services Program at the Brattleboro Retreat, VT; developer of Mindfulness-based Trauma Recovery (MBTR); adjunct faculty member, Trauma Center Professional Training Institute.

Eli Newberger, MD

Assistant Professor of Pediatrics, Harvard Medical School; Founder and Medical Director, Child Protection Program, Children's Hospital Boston, 1970-2000; co-founding pianist and tuba, New Black Eagle Jazz Band; author, *The Men They Will Become: The Nature and Nurture of Male Character*.

Pat Ogden, PhD

Founder and Director, Sensorimotor Psychotherapy Institute, Boulder, CO; Faculty, Naropa University; Author, *Trauma and the Body: A Sensorimotor Approach to Psychotherapy*.

Albert Pesso

Co-founder, PBSP (Pesso-Boyden System Psychomotor); President, Psychomotor Institute; international trainer and lecturer; author, *Experience in Action: Moving Psychotherapy*.

Poster Submission and Student Submission Contest

The Trauma Center at JRI is pleased to offer its poster submission and student submission contest. This year, the Trauma Center is accepting research posters from graduate students, interns, post-doctoral fellows, and junior investigators. Also welcome are poster submissions from more senior clinical practitioners describing assessment approaches, treatment frameworks, and program models. Practicing clinicians who use the arts/expressive arts in their work with traumatized clients and who are interested in representing their work in a poster display should include one or more jpeg pictures depicting the products they are developing with their clients. Developers of innovative trauma services and interventions who are interested in showcasing their intervention/treatment/assessment models also are welcome.

Selected posters will be prominently featured on day two of the conference, with a formal poster session beginning at 5 p.m. Posters will be displayed on 6- x 2-foot flat/horizontal tables. Proposals that relate to this year's primary conference themes (neuroscience, attachment, and/or therapeutic interventions) will receive special consideration. In addition, all student, intern, and fellow submissions will automatically be entered into a poster competition, with special prizes (medals and cash) awarded to the three strongest submissions. Prizes will be awarded during the evening poster session/social hour.

Proposals should be no longer than 200 words, excluding proposal title, author names, author affiliations, and contact information (email/phone) of the lead author. Submissions should be submitted electronically to the attention of Dr. Joseph Spinazzola, PhD, by April 1, 2010: jspinazzola@traumacenter.org. Applicants will be notified electronically of acceptance by April 15.

ACCREDITATION

The Meadows is approved by the following boards to offering continuing education. NAADAC Approved Provider, Provider # 000217. The Meadows is recognized by the National Board for Certified Counselors to offer continuing education, Provider # 5687. Course meets qualification for continuing education credit for MFTs and/or LCSW as required by the California Board of Behavioral Sciences, Provider # 2645. Provider Approved by CAADAC, Provider # OS-03-960-0811. Provider Approved by CAADE, Provider # CP40 810 C 0710. MFT for the State of Illinois, Provider # 168-000155. LCSW/LSW for the State of Illinois, Provider # 159-000839. Texas State Board of MFT Approved. MSW for the State of Texas, Provider # 2462. The Collaborative of NASW – MA # D40800.

"The Justice Resource Institute is approved by the American Psychological Association to sponsor continuing education for psychologists. The Justice Resource Institute maintains responsibility for this program and its content."

Pre-conference Workshop I meets criteria for 14 credit hours; Pre-conference Workshops II through VI meet criteria for 7 credit hours each. The Psychological Trauma Conference meets criteria for 13 credit hours, and the combined program meets criteria for 20 hours. The combined program with Workshop I meets criteria for 27 credit hours.

John Ratey, MD

Clinical Associate Professor of Psychiatry, Harvard Medical School; author, *The Neuropsychiatry of Personality Disorders*, *Driven to Distraction*, *Shadow Syndromes*, *A User's Guide to the Brain*, and *Spark: The Revolutionary Science of Exercise and the Brain*.

Emily Saul, EdM, LMHC

Director of Training, Project Joy: Life is Good Kids Foundation.

Joseph Spinazzola, PhD

Executive Director, Trauma Center at JRI; Coordinator, Complex Trauma Treatment Network, National Child Traumatic Stress Network; Principal Investigator, CDC-funded TraumaDrama research project.

Meg Striepe, PhD

Adjunct Faculty, University of Minnesota Medical School, Center for Sexual Health.

Anthony Toombs, BA

Director of Community Relations and Trainer, Project Joy.

Colwyn Trevarthen, PhD

Professor (Emeritus) of Child Psychology and Psychobiology, University of Edinburgh; Fellow, Royal Society of Edinburgh; Member, Norwegian Academy of Sciences and Letters; Vice-president, British Association for Early Childhood Education; author, *Communicative Musicality: Exploring the Basis of Human Companionship*, and *Brain Circuits and Functions of the Mind*.

Ed Tronick, PhD

University Distinguished Professor, University of Massachusetts Boston; Director of Child Development Unit, Children's Hospital Boston; author, *The Neurobehavioral and Social Emotional Development of Infants and Children*.

Jennifer Turner

Yoga Instructor, Trauma Center at JRI.

Bessel A. van der Kolk, MD

Professor of Psychiatry, Boston University School of Medicine; Medical Director, Trauma Center at JRI; Past President, International Society for Traumatic Stress Studies; Director, National Complex Trauma Treatment Network (NCTSN); author, *Psychological Trauma*; editor, *Traumatic Stress: The Effects of Overwhelming Experience on Mind, Body, and Society*.

Elizabeth Warner, PsyD

SMART Project Director; Senior Supervisor, Trauma Center at JRI.

Anne Westcott, LICSW

SMART Project Training Coordinator; Sensorimotor Psychotherapy teacher/trainer; Senior Supervisor, Trauma Center at JRI.

Erica Zinter, LICSW

Adjunct faculty, Smith College School for Social Work.

Marla Zucker, PhD

Clinical Director, Trauma Center at JRI.

Registration

Please complete the form below or register online at themeadows.com

	COURSE	FULL PRICE	EARLY REGISTRATION 30 DAYS PRIOR	RESIDENTS, FELLOWS IN TRAINING, FULL-TIME STUDENTS
1	Psychological Trauma Conference and Pre-conference Institute – Choose Workshop (refer to page 2) Check Box: <input type="checkbox"/> II <input type="checkbox"/> III <input type="checkbox"/> IV <input type="checkbox"/> V <input type="checkbox"/> VI Thursday through Saturday, May 20-22, 2010	<input type="checkbox"/> \$415	<input type="checkbox"/> \$390	<input type="checkbox"/> \$280**
2	Psychological Trauma Conference Only Friday and Saturday, May 21-22, 2010	<input type="checkbox"/> \$305	<input type="checkbox"/> \$280	<input type="checkbox"/> \$200**
3	Psychological Trauma Conference and Workshop I – Yoga and the Traumatized Relation to the Body Wednesday through Saturday, May 19-22, 2010	<input type="checkbox"/> \$490	<input type="checkbox"/> \$455	<input type="checkbox"/> \$355**
4	Workshop I Only – Yoga and the Traumatized Relation to the Body Wednesday and Thursday, May 19-20, 2010	<input type="checkbox"/> \$260	<input type="checkbox"/> \$225	<input type="checkbox"/> \$205**
5	Pre-conference Institute Only – Choose Workshop (refer to page 2) Check Box: <input type="checkbox"/> II <input type="checkbox"/> III <input type="checkbox"/> IV <input type="checkbox"/> V <input type="checkbox"/> VI Thursday, May 20, 2010	<input type="checkbox"/> \$185	<input type="checkbox"/> \$150	<input type="checkbox"/> \$130**

** Letter of verification is required from your training program; fax to 928-684-7821 or email to events@themeadows.com

Name _____

Credentials _____

Address _____

City _____

State _____ Zip _____

Daytime Phone _____

Fax _____

Email _____

Method of Payment:

Please include payment to ensure registration. You will receive a confirmation letter by mail or email if registering online; receipt of payment will be given at the event.

Check enclosed in the amount of:

\$ _____
(Make checks payable to The Meadows.)

Charge \$ _____

to my Visa MC

Credit Card # _____

Exp. Date _____ *Credit Card Security # _____

Signature _____

* The credit card security number is the last three digits located on the back of your credit card.

RSVP at least one week prior to event.

GENERAL INFORMATION

Send to:

ATTN: Registration Desk
MAIL: The Meadows
553 W. Wickenburg Way
Wickenburg, AZ 85390
PHONE: 800-240-5522
FAX: 928-684-7821 (secured fax)
EMAIL: events@themeadows.com

For FAST registration, register online at:
themeadows.com

Refund Policy: An administrative fee of \$60 is deducted for cancellation. Refund requests must be made in writing to The Meadows, 553 W. Wickenburg Way, Wickenburg, AZ 85390, fax: 928-684-7821, or email: events@themeadows.com; requests must be postmarked by May 1, 2010. No refunds will be made thereafter.

Special Accommodations: If you need any accommodation for a disability, please call 800-240-5522 no later than three weeks prior to the course.

Course Location and Hotel Accommodations: The conference will be held at the Seaport World Trade Center. A limited number of rooms have been reserved at the Seaport Hotel until April 19, 2010, at a discounted rate for conference attendees. Call 877-SEAPORT for reservations. Please tell the hotel you are with the Trauma Conference.